



HOMELAND TOWERS

Existing cell site locations in towns in Connecticut and their proximity to schools.

Prepared for:
Town of New Canaan

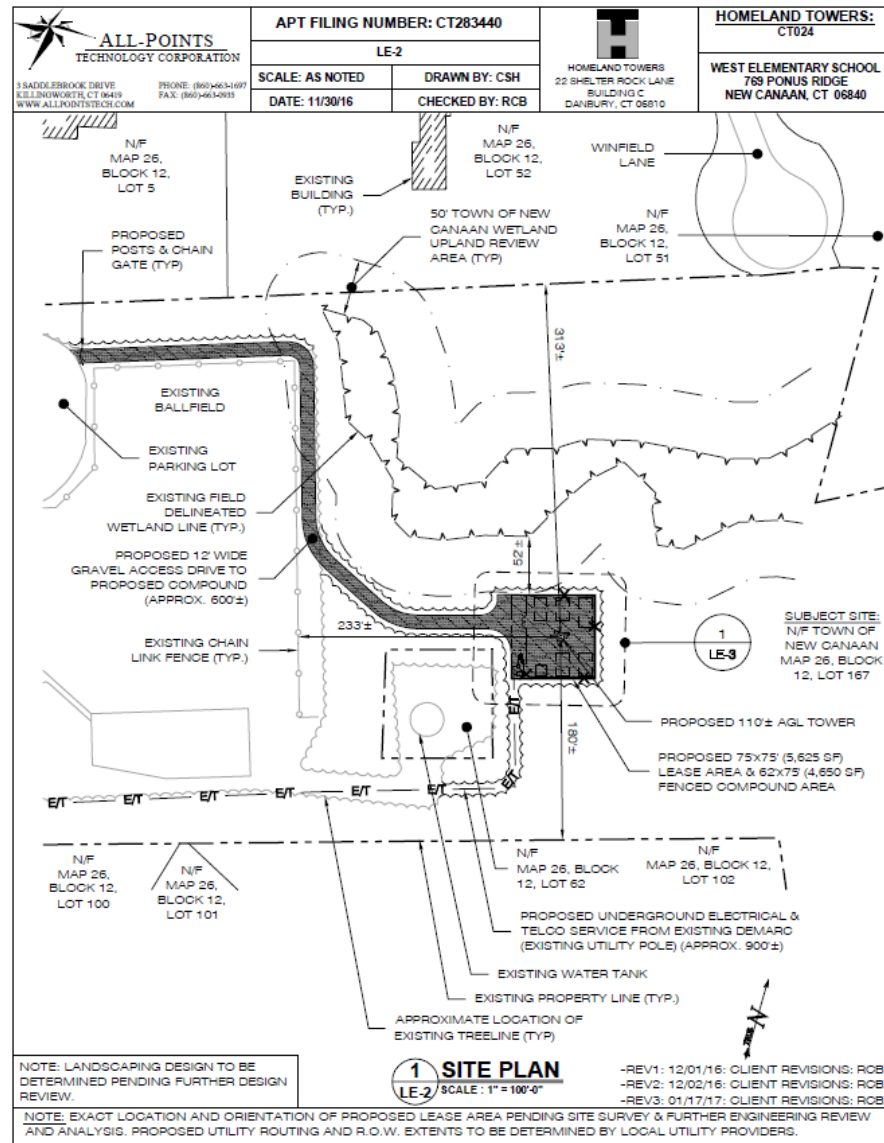
Prepared by:
Raymond Vergati
Homeland Towers, LLC
4/1/17

Homeland Towers is proposing to construct a 110' tall stealth monopine cell tower to be located at 769 Ponus Ridge Road, New Canaan, CT. The proposed tower is on Town owned property which is a 47.47 acre parcel currently improved with West Elementary School and an existing Aquarion water tank. Below is an aerial image of the school property with the proposed tower location marked to the east which is 580' +/- from the West Elementary School building.

Aerial Image of Proposed Tower's proximity to West Elementary School



Proposed Site Plan



List of existing cell sites and their proximity to schools

	Cell Site Type	Cell site Address	Town	Tower Height	School	Distance from cell site to School Building	# of carriers on Tower/structure
1	Tower	95 High Street	Portland	105'	Portland High School	20' +/-	2 carriers
2	Tower	29 Massaco Street	Simsbury	150'	Central School	20' +/-	Public safety
3	Church Steeple	20 Brookdale Road	Stamford	55'	Brookdale Nursery School	25' +/-	1 carrier
4	Tower	97 High Street	Portland	80'	Portland Middle School	190' +/-	1 carrier
5	Tower	239 Middle Turnpike East	Manchester	190'	Illing Middle School	190' +/-	5 carriers
6	Tower	56 Norfield Road (Weston Town Hall)	Weston	190'	Hurlbutt Elementary School	200' +/-	4 carriers
7	Light Pole	1 Lincoln Blvd.	Bridgeport	95'	Central High School	210' +/-	1 carrier
8	Rooftop	267 Grant Street	Bridgeport	144'	Warren Harding High School	213' +/-	1 carrier
9	Rooftop	419 Whalley Avenue	New Haven	50'	Yeshivas Beis Dovid Shlomo School	253' +/-	2 carriers
10	Tower	1330 Chopsey Hill Road	Bridgeport	240'	Park City Magnet School	270' +/-	5+ carrier
11	Tower	5 Barbara Road	Tolland	160'	Tolland High School	289' +/-	5 carriers
12	Tower	20 Great Oak Road	Oxford	150'	Quaker Farms School	327' +/-	3 carriers
13	Tower	20 Antolini Road	New Hartford	145'	Ann Antolini School	350' +/-	5+ carriers
14	Tower	723 Farmington Avenue	New Britain	120'	Pulaski Middle School	400' +/-	4 carriers
15	Tower	87 Monce Road	Burlington	120'	Lake Garda Elementary School	470' +/-	In construction
16	Rooftop	419 Whalley Avenue	New Haven	50'	Yeshiva Elementary School	482' +/-	2 carriers
17	CL&P Power Mount	670 Chapel Street	Stratford	123'	Chapel School	534' +/-	2 carriers
18	Tower	323 Route 81	Killingworth	140'	Killingworth Elementary School	551' +/-	2 carriers
19	DPS	46 Fenwood Lane	Wilton	165'	Miller Driscoll School	571' +/-	4 carriers
20	Tower	51 Daniels Avenue	Waterford	180'	Dual Language Arts Academy	575' +/-	2+ carriers
21	Tower	302 Ball Pond Road	Fairfield	175'	Consolidated School	622' +/-	4 carriers

	Cell Site Type	Cell Site Address	Town	Tower Height	School	Distance from cell site to School Building	# of carriers on Tower/structure
22	Tower	1590 Newfield Avenue	Stamford	160'	King Low Heywood Thomas School	666' +/-	4 carriers
23	Tower	53 Westminster Road	Canterbury	180'	Canterbury Elementary School	675' +/-	2 carriers
24	Aquarion Water Tank	77 Blachley Road	Stamford	85'	Rogers International School	685' +/-	2 carriers
25	Tower	28 Great Oak Lane	Redding	180'	Redding Elementary School	700' +/-	1 carrier
26	Wood Pole	24 1/2 Richdale Drive	Wilton	71'	Cider Mill School	700' +/-	1 carrier
27	Wood Pole	24 1/2 Richdale Drive	Wilton	71'	Middlebrook School	870' +/-	1 carrier
28	Tower	66 Wall Street	Hebron	150'	Rham Middle School	759' +/-	3 carriers
29	Aquarion Water Tank	677 South Avenue	New Canaan	130'	New Canaan High School	1,100' +/-	4 carriers

** Information on Connecticut existing cell sites obtained from Connecticut Siting Council Database and does not include every site located within close proximity to a school.

The following pages include aerial images of the existing cell sites and their proximity to public/private schools.

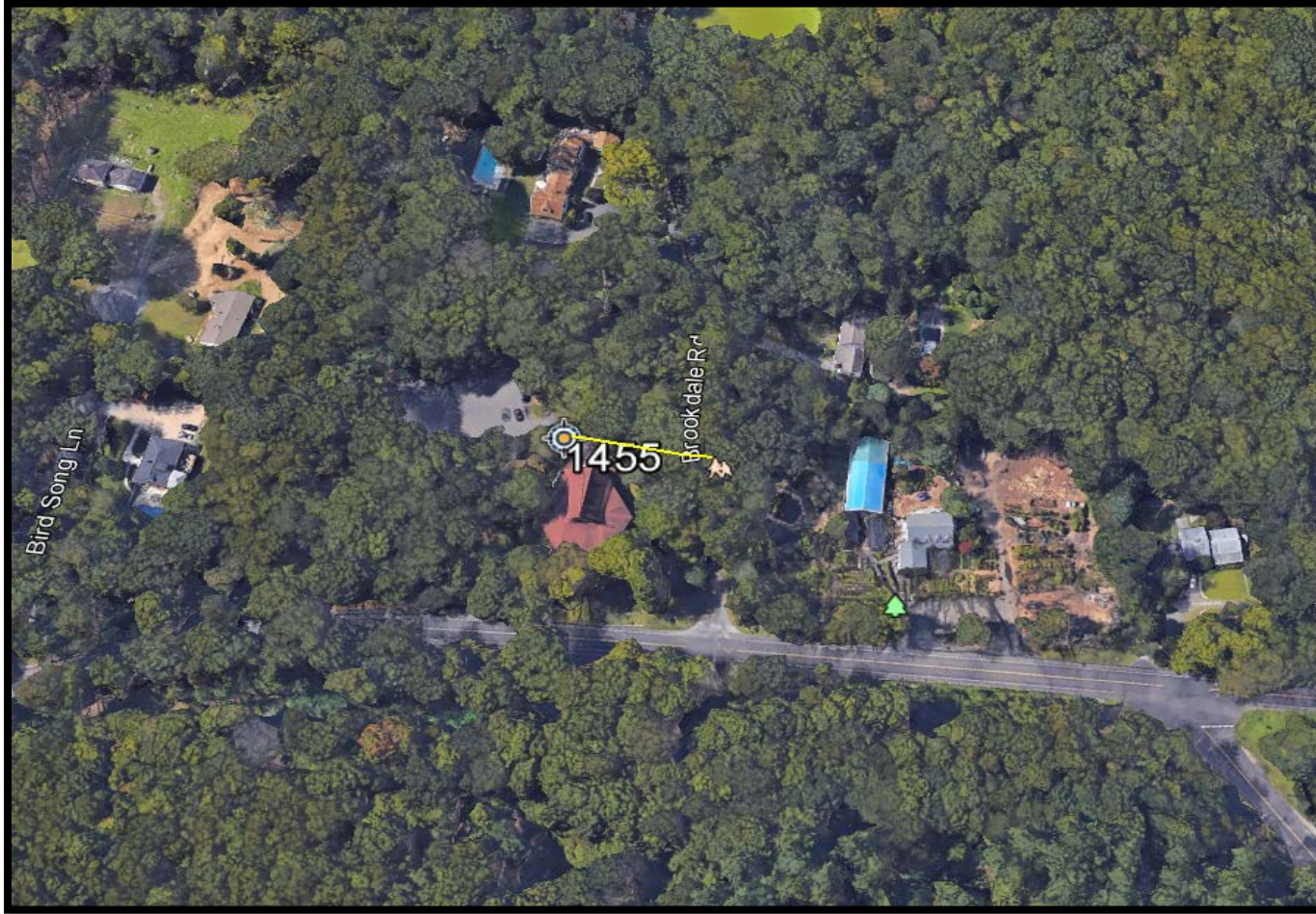
1. Tower located 20' from Portland High School, Portland, CT.



2. Tower located 20' from Central School, Simsbury, CT.



3. Church Steeple 55' from Brookdale Nursery School, Stamford, CT.



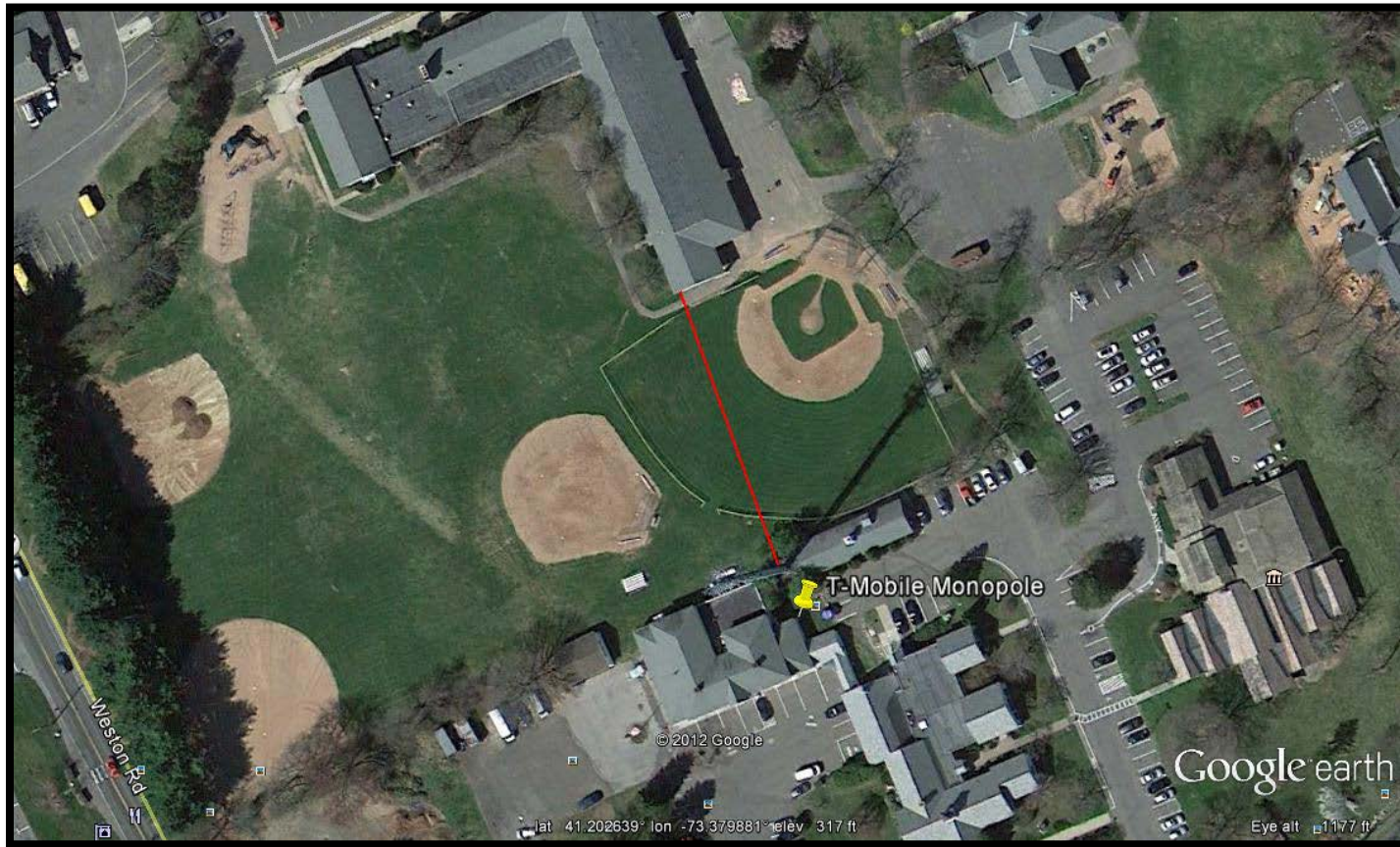
4. Tower located 190' from Portland Middle School, Portland, CT.



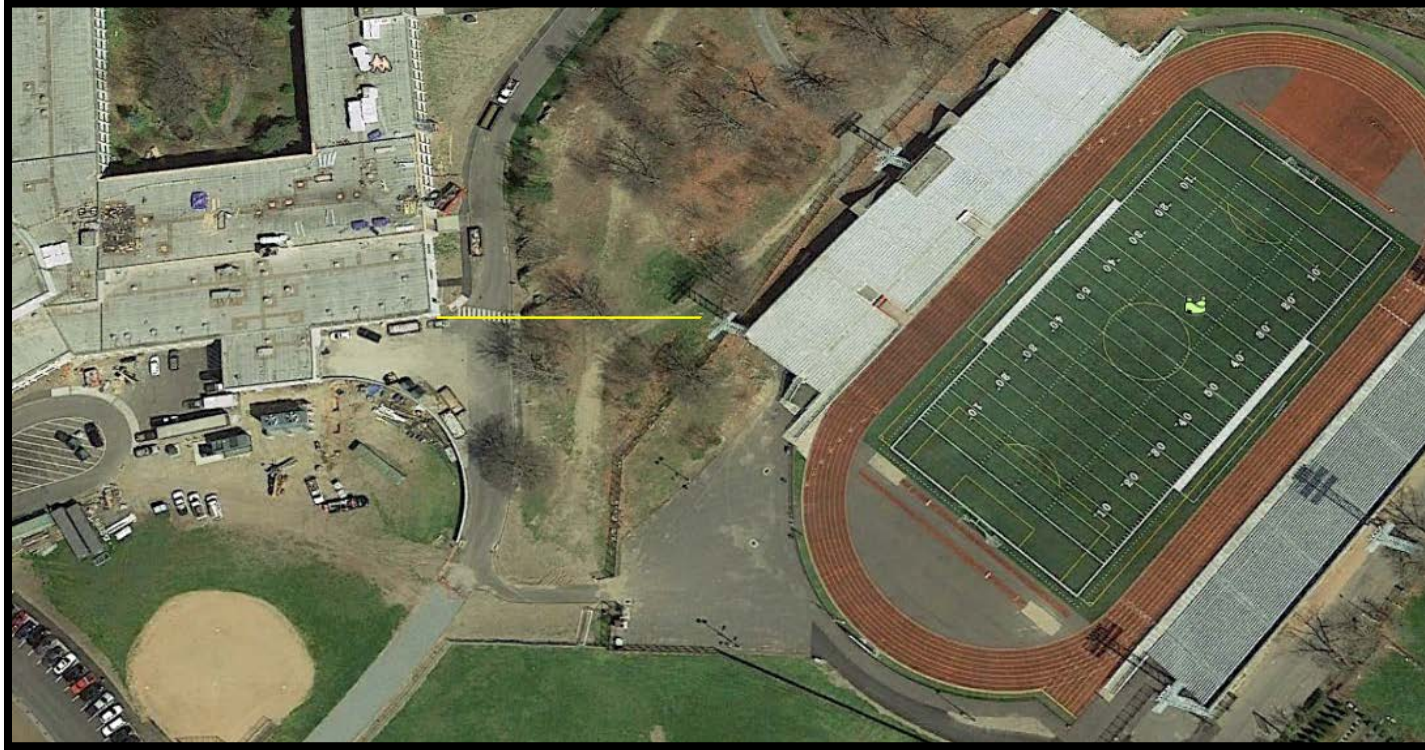
5. Tower located 190' from Illing Middle School, Manchester, CT.



6. Tower located 200' from Hurlbutt Elementary School, Weston, CT.



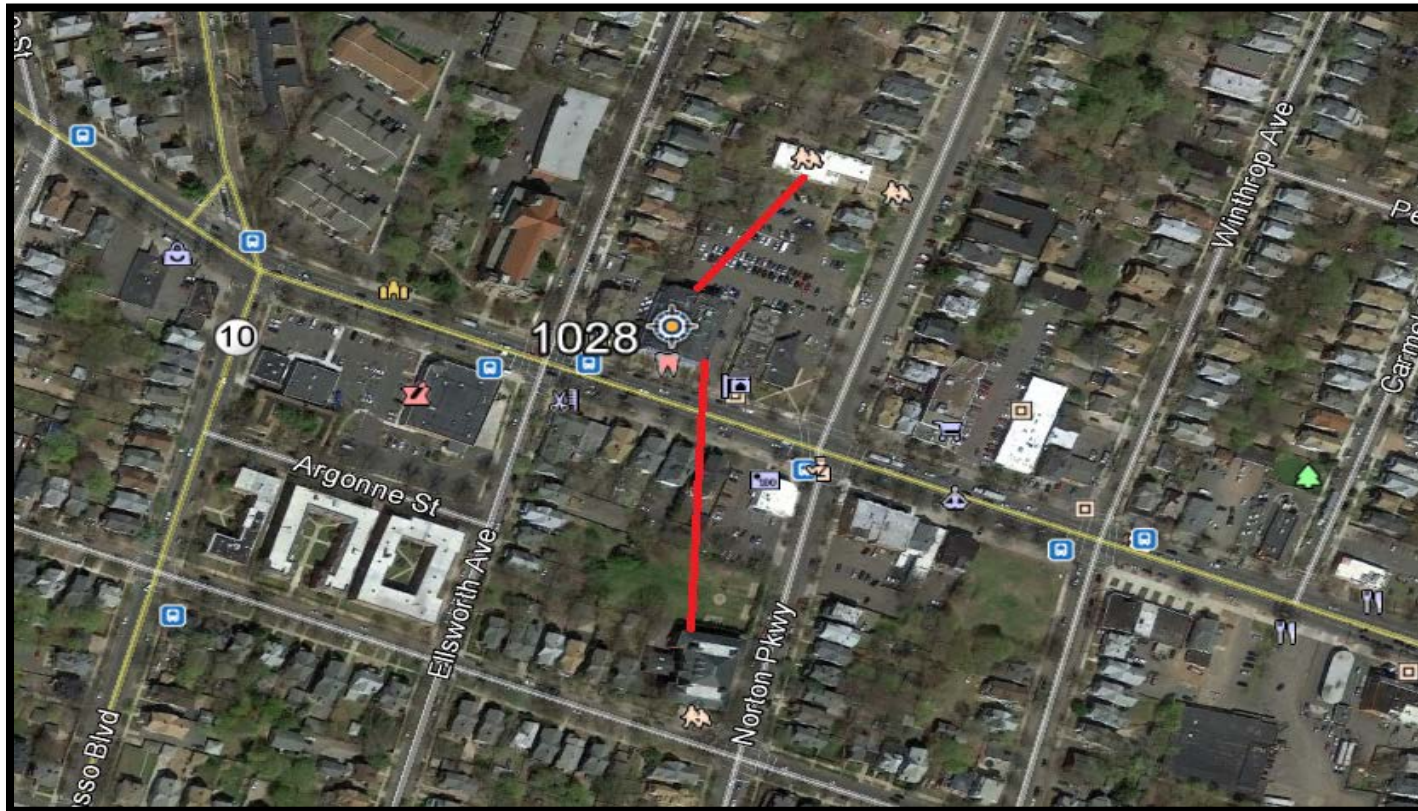
7. Light Stanchion Tower located 210' from Central High School, Bridgeport, CT.



8. Verizon rooftop installation located 213' from Warren Harding High School, Bridgeport, CT.



9. Verizon & T-Mobile rooftop installation located 253' from Yeshivas Beis Dovid Shlomo School, New Haven, CT.



10. Tower located 270' from Park City Magnet School, Bridgeport, CT.



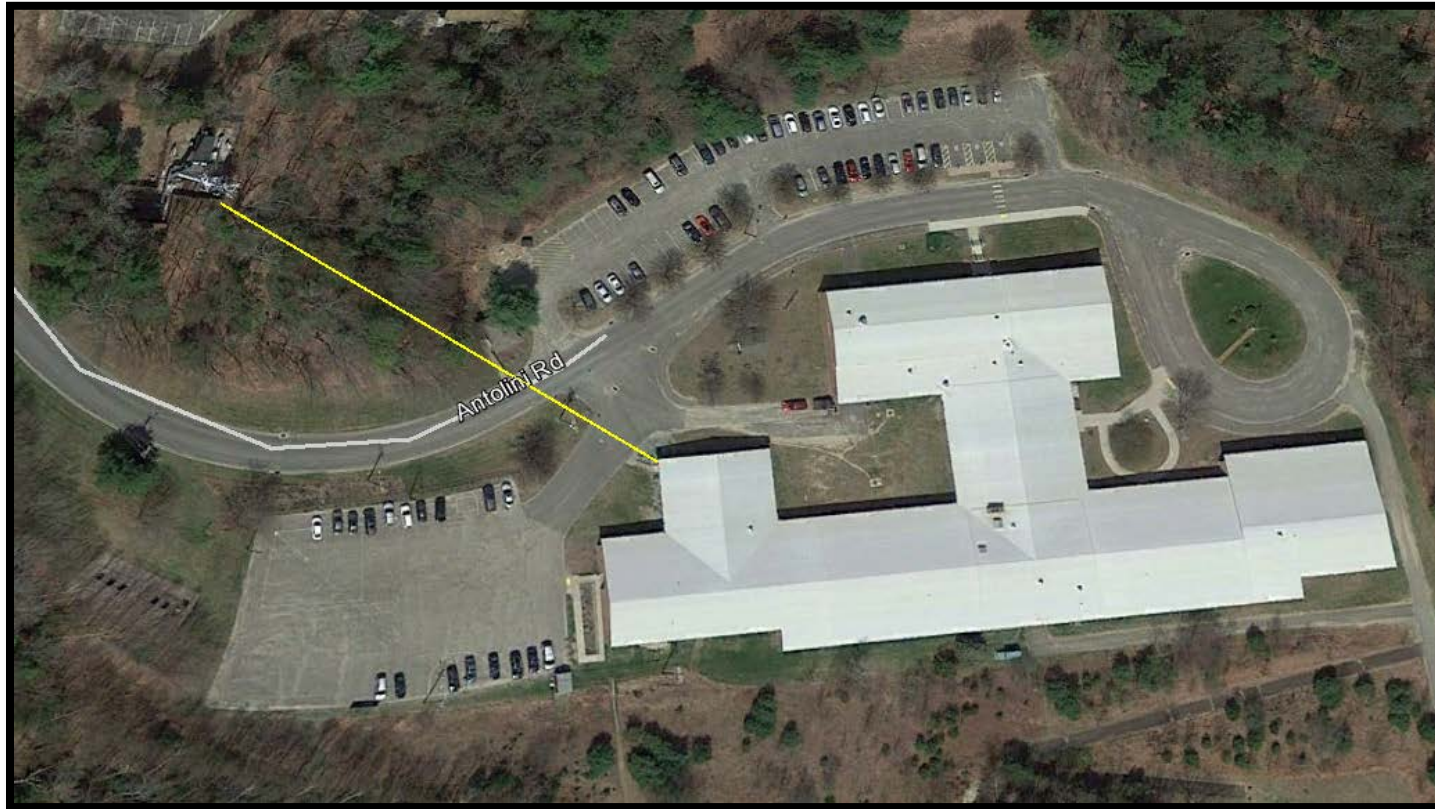
11. Tower located 289' from Tolland High School, Tolland, CT.



12. Tower located 327' from Quaker Farms School, Oxford, CT.



13. Tower located 350' from Ann Antolini School, New Hartford, CT.



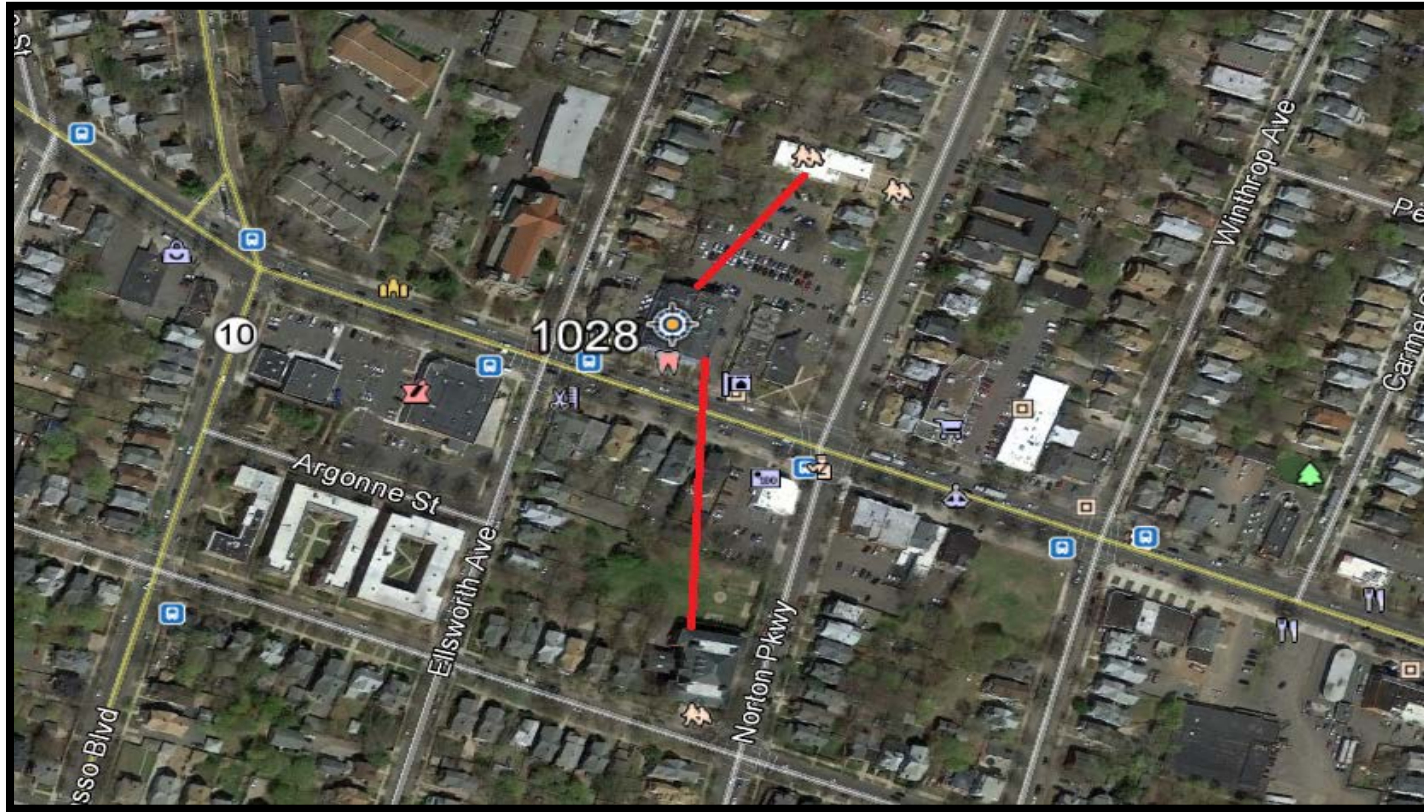
14. Tower located 400' from Pulaski Middle School, New Britain, CT.



15. Homeland Towers site (construction pending) at Burlington Fire Department 470' from Lake Garda Elementary School, Burlington, CT.



16. Verizon & T-Mobile rooftop installation located 482' from Yeshiva Elementary School, New Haven, CT.



17. AT&T/T-Mobile CL&P pole mounts located 534' from Chapel School, Stratford, CT.



18. Tower located 551' from Killingworth Elementary School, Killingworth, CT.



19. Tower located 571' from Miller Driscoll School, Wilton, CT.



20. Tower located 575' from Dual Language Arts Academy, Waterford, CT.



21. Tower located 590' from Consolidated School, New Fairfield, CT.



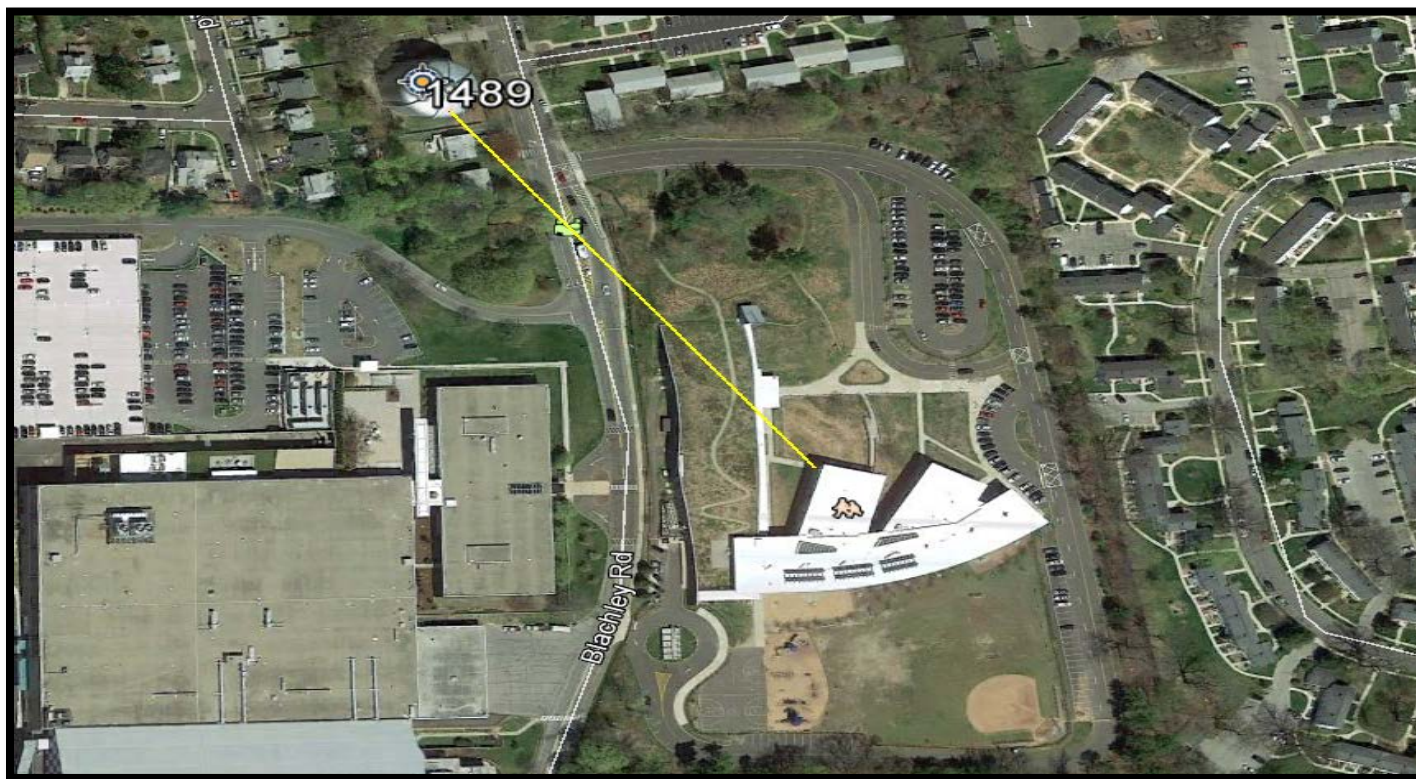
22. Tower located 666' from King Low Heywood Thomas School, Stamford, CT.



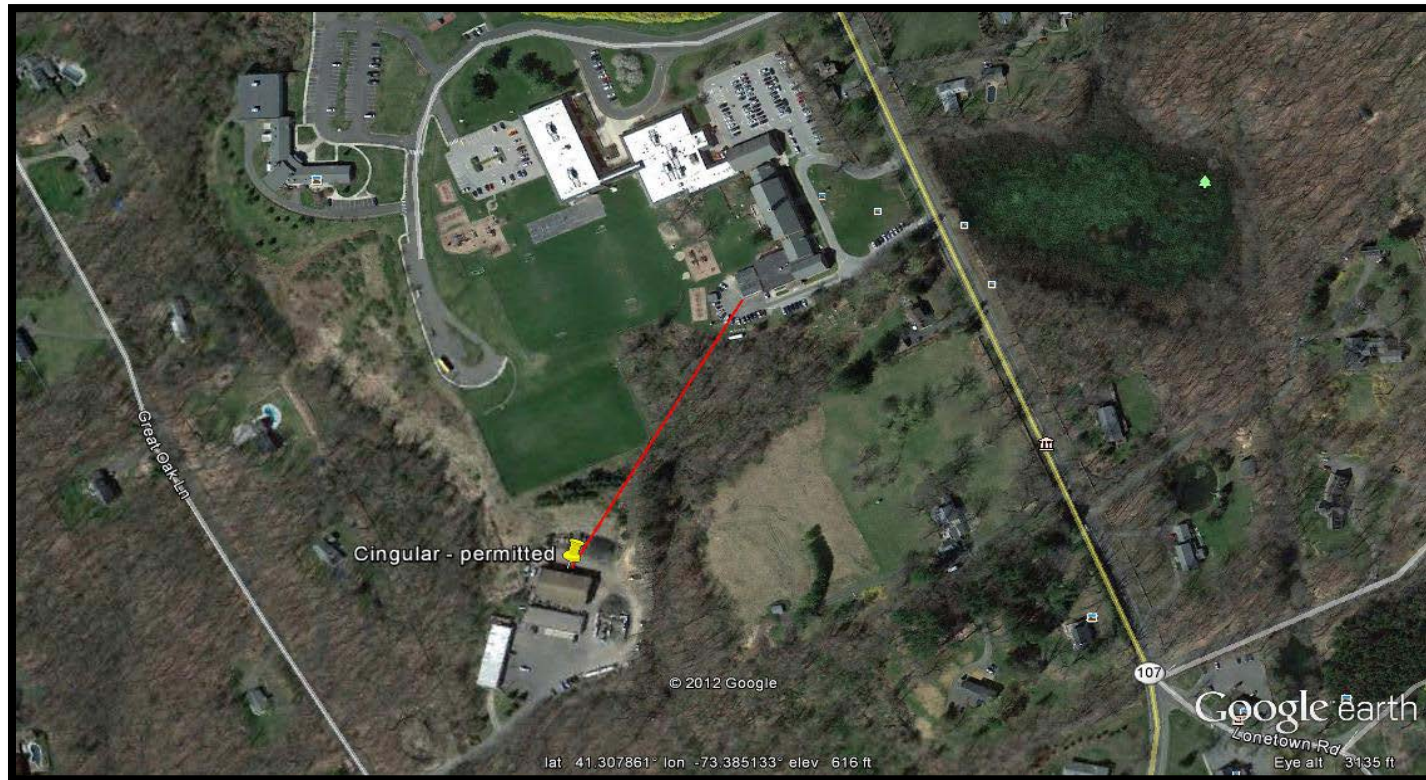
23. Tower located 675' from Canterbury Elementary School, Canterbury, CT.



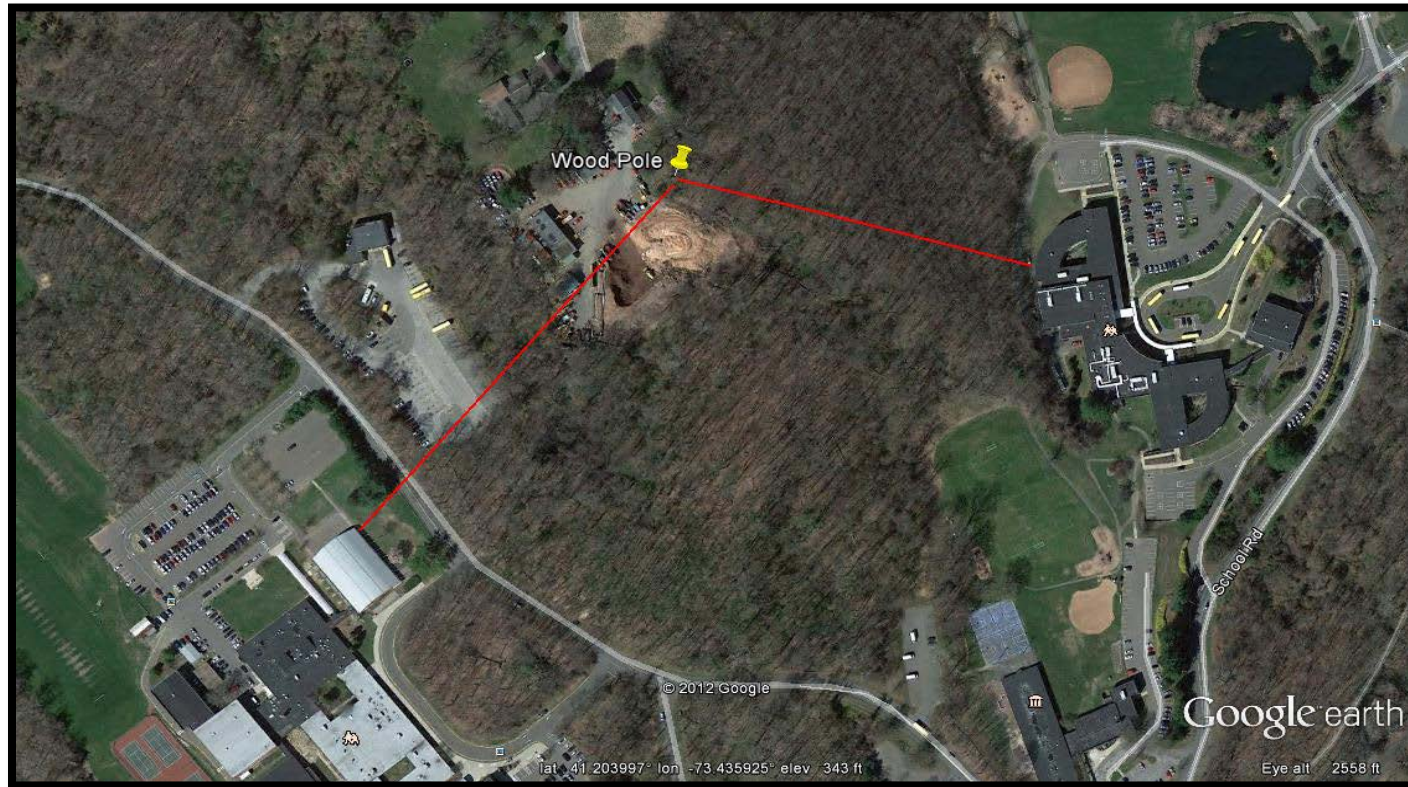
24. Aquarion Water Tank with cell antennas located 685' from Rogers International School, Stamford, CT.



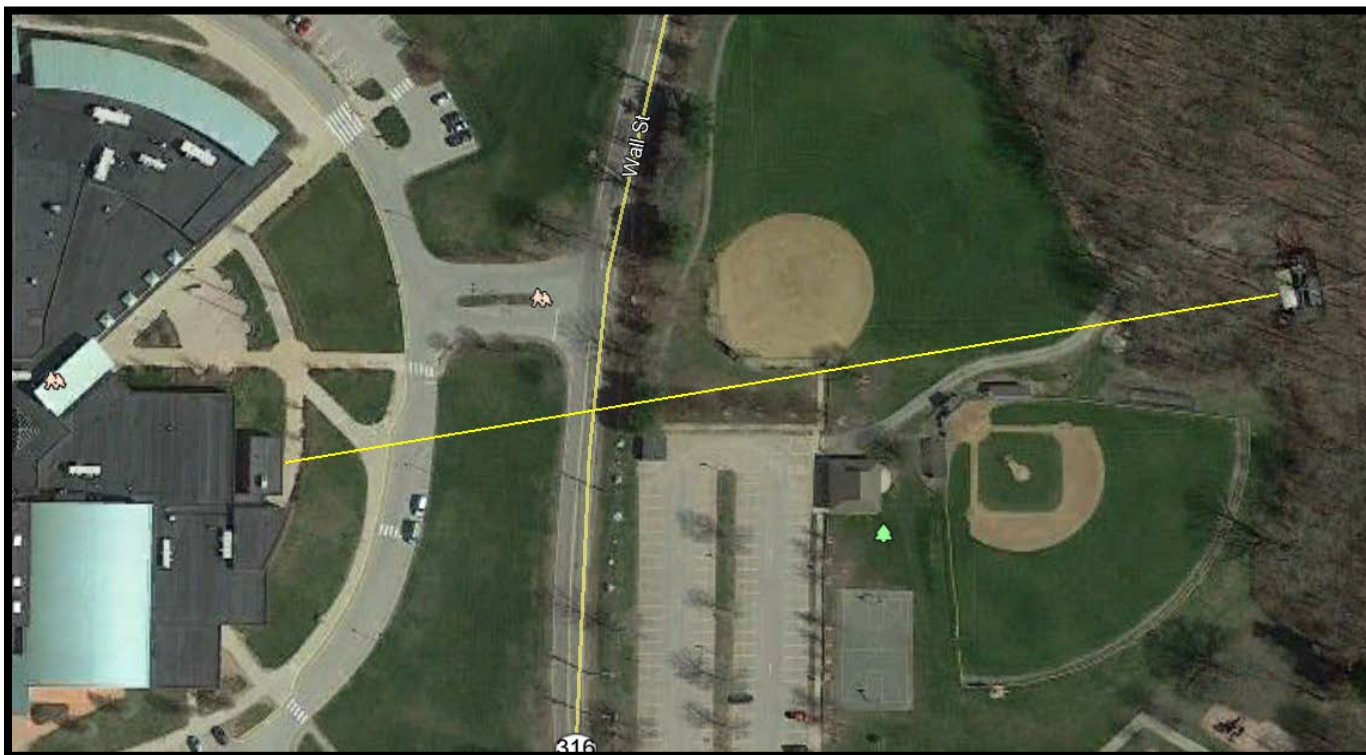
25. Tower located 700' from Redding Elementary School, Redding, CT.



26. & 27. Richard Knapp Tower located 700' from Cider Mill and 870' from Middlebrook School, Wilton, CT.



28. Tower located 759' from Rham Middle School, Hebron, CT.



29. Aquarion Water Tank with cell antennas located 1,100' from New Canaan High School, New Canaan, CT.



Conclusion:

There are many existing cell sites located on or near school property throughout Connecticut. The sites listed above are just a sampling and not a complete list. The closest tower sites on school property appear to be in the towns of Portland and Simsbury where existing towers are approximately 20' away from school buildings. Homeland's proposed tower is approximately 580' away from West Elementary School, the tower location is in a well wooded area that offers good screening and setbacks. This proposed location is consistent with other approved towers in the vicinity of schools. As a matter of fact, the Town of New Canaan's High School is located approximately 1100' from the existing Aquarion Water tank at Waveny Park. This water tank serves as a cell site for all the carriers along with the town's public safety antennas. There are multiple ball fields at the park, the closest being approximately 120' away from the tank.

It should be noted that throughout the country, numerous cell sites exist on school properties. In addition to these cell sites, many schools themselves have their own Wi-Fi networks and public safety/dispatch antennas on school rooftops.

Additionally, Homeland Towers is preparing to file an application with the Connecticut Siting Council for a proposed 150' cell tower on the town of Easton's school property located at Staples Elementary School, 515 Morehouse Rd.